

Parashara's Light

Palm Edition



INSTALLATION GUIDE
FOR MACINTOSH/UNIX USERS



P.O. Box 2152, Fairfield, Iowa 52556, USA

Tel : (641) 472-0855 Fax : (641) 469-6847

Email : sales@parashara.com

Website : palm.parashara.com



Installation Procedure

STEP 1 : Getting your desktop ready

Please ensure that you have the Palm Desktop installed on your machine, prior to using this installer. Palm Desktop is a software that is provided by the manufacturer/distributor along with the Palm Device. If you do not have it, contact your Palm distributor or download it from <http://www.palm.com>. Once you are sure you have the Palm Desktop, connect your Palm device and do a HotSync to ensure that your Palm is connected properly.

STEP 2 : Get the installer for Parashara's Light - Palm Edition

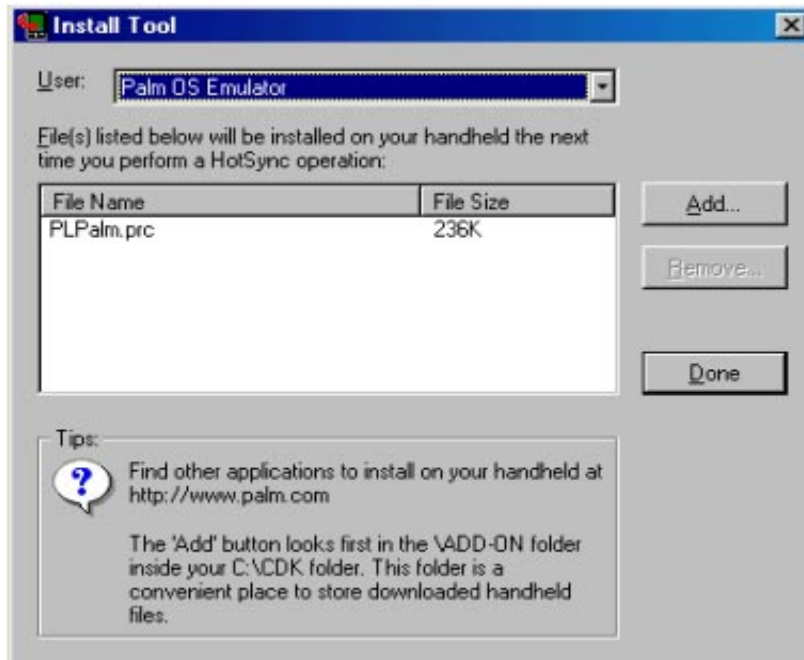
The trial version of *Parashara's Light - Palm Edition* can be obtained by two alternative methods. These are as follows :

- 2.1 You can get a trial version of Parashara's Light - Palm Edition from <http://palm.parashara.com/download/others.htm>. From this page you can download a file, **PLPalm.prc**. Download it to any location on your machine and take note of the location.
- 2.2 Alternatively, you can send in a request for a demo copy by email to GeoVision Software Inc. or its distributors. Requests for demo copies can be made at sales@parashara.com.

STEP 3 : Selection with Install Tool

Install Tool is provided by the Palm manufacturers and is a part of the Palm Desktop software. Follow the steps given below:


- 3.1 Double click the PLPalm.prc file to launch the Install tool. (Or start the Install Tool manually, click on the 'Add' button, and choose PLPalm.prc from the location where you saved it on your hard drive).
- 3.2 Click on 'Done' button to finish your selection.
- 3.3 Now HotSync your PC with Palm as described below.



Note : *The illustration shows the Install Tool as it appears in Windows. On other operating systems it will look different.*

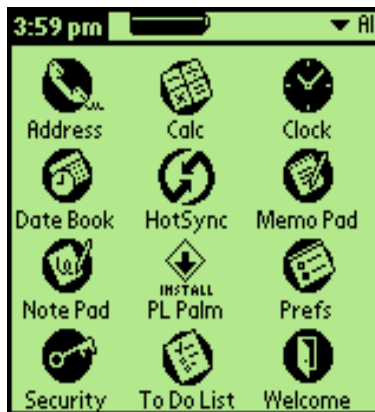
STEP 4 : Transferring Parashara's Light to your Palm

You will now need to HotSync your Palm Device with your Personal Computer to transfer the application to your Palm.

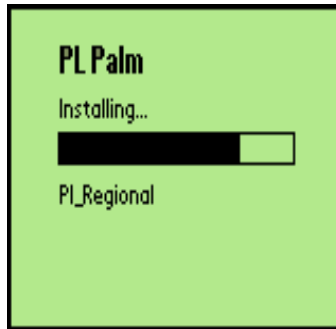
- 4.1 As requested in Step 1, please ensure that the Palm Interface cable is securely connected to the Serial Port of your computer.
- 4.2 Please check that the HotSync Manager is running. You will find an icon in your Task Bar (close to your clock). If you cannot find this icon, please start the HotSync Manager manually. 
- 4.3 Press the HotSync button provided on the cradle on which your Palm Device is mounted. (Alternatively, start your Palm Device and choose the Systems Folder. Select HotSync from the Systems Folder). Wait until the Synchronization process is completed.
- 4.4 The installer for *Parashara's Light - Palm Edition* has been transferred from your desktop to your Palm Device, in the name of Install PL Palm.

STEP 5 : Installing Parashara's Light on your Palm

- 5.1 The installer for **Parashara's Light - Palm Edition** has been installed on your Palm Device. Tap the Install PL Palm icon to start the installer.



- 5.2 Upon successful completion of the process, Parashara's Light will be installed on your Palm device. Parashara's Light is ready to be used on your Palm Device.



Note : *Parashara's Light will run in the Demo mode, until you Register. Calculations will not be accurate in the Demo mode.*

STEP 6 : Registration

- 6.1 You will need to register in order to terminate the demo mode. To register, visit the following URL: <http://palm.parashara.com/buy.asp>
- 6.2 Within approximately one business day after receipt of your registration, you will receive an email from **palm@parashara.com**. The email will have an attachment called **plpalm.pdb**, and the instructions about how to upload it to your Palm device and register your unregistered copy. Save the attached file to your desktop, or any other convenient location on your harddrive. *Please keep a copy of this attached file in a place where you can find it back in the future, in case you ever need to reinstall the program.*
- 6.3.1 Start the Install Tool from the Palm Desktop program group. (Click on Start-> Programs-> Palm Desktop-> Install Tool).
- 6.3.2 Click on the 'Add' button. Choose **PLPalm.pdb** from the location where you saved it on your hard drive.

- 6.3.3 Click on 'Done' button' to finish your selection.
- 6.3.4 HotSync your PC by pressing the HotSync button on the Palm with Palm as described above.
- 6.4 Parashara's Light is now successfully installed on your Palm Device! Please feel free to explore all the features of the software.