

Parashara's Light

Palm Edition



INSTALLATION GUIDE
FOR WINDOWS USERS



P.O. Box 2152, Fairfield, Iowa 52556, USA

Tel : (641) 472-0855 Fax : (641) 469-6847

Email : sales@parashara.com

Website : palm.parashara.com



Installation Procedure

STEP 1 : Getting your desktop ready

Please ensure that you have the Palm Desktop installed on your machine, prior to using this installer. Palm Desktop is a software that is provided by the manufacturer/distributor along with the Palm Device. If you do not have it, contact your Palm distributor or download it from <http://www.palm.com>. Once you are sure you have the Palm Desktop, connect your Palm device and do a HotSync to ensure that your Palm is connected properly.

STEP 2 : Get the installer for Parashara's Light - Palm Edition

The trial version of Parashara's Light - Palm Edition can be obtained by two alternative methods. These are :

- 2.1 Users who are using Windows operating system, can download it from <http://palm.parashara.com/download/windows.htm>. You can get a trial version of Parashara's Light - Palm Edition from <http://palm.parashara.com/download/windows.htm>. From this page you can download a file, Setup.exe. Download it to any location on your machine and take note of the location. We recommend you use the desktop.
- 2.2 Alternatively, you can send in a request for a demo copy to GeoVision Software Inc. or its distributors. Requests for demo copies can be made at sales@parashara.com.

STEP 3 : Installing the desktop components

3.1 Double Click the Setup application from the location where you saved it while downloading (if you used a location other than the Desktop, you will need to use the Windows Explorer to access the file). This will start the installation process of *Parashara's Light - Palm Edition and PL Exchange*.

3.2 Terms of Agreement

Please take your time to read the License Agreement and confirm your acceptance before proceeding with the installation. If you disagree, the installation process will terminate. Click the 'I Agree' button to continue.



3.3. Select the product of your choice to Install

Please select one or both of the two products that can be installed. You have the following choices:

Parashara's Light - Palm Edition : This is the actual software that will run on your Palm.

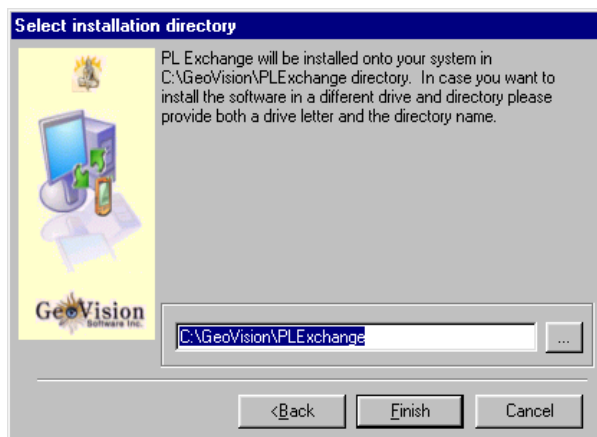
PL Exchange : This is a utility that will let you exchange chart files between the Desktop and Palm editions of Parashara's Light.

Please mark the checkboxes of the products you want to install, and click on the 'Next' button.



3.4 Select the Installation Directory

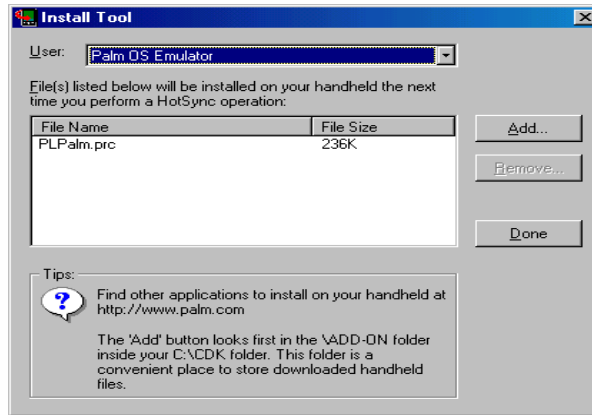
This dialog will come up if you choose to install PL Exchange also. By default PL Exchange will be installed on your machine in a directory C:\GeoVision\PLExchange. We recommend you keep this path, but in case you want to install the software in a different drive and directory, please provide both a drive letter and a directory name.



You can also use the browse button to choose a different directory. Click the 'Finish' button to continue.

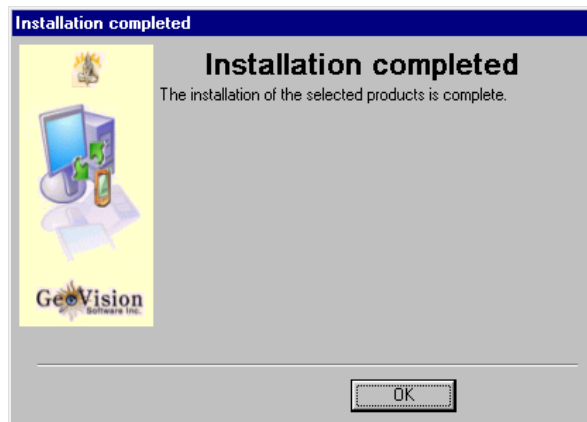
3.5 Selection with Install Tool

This dialog will only come up if you have chosen to install Parashara's Light-Palm Edition. The installer will now launch your Palm's 'Install Tool' utility to prepare the installation of PL to your Palm. Please press the 'Done' button to continue.



3.6 Installation complete

The Installation will create a new program group, 'GeoVision'. This will contain the shortcut for launching the PL-Exchange utility and contain a pdf user manual for the applications you installed.



Please reboot your machine after the installation is complete to let changes take place.

STEP 4 : Transferring Parashara's Light to your Palm

You will now need to HotSync your Palm Device with your Personal Computer to transfer the application to your Palm.

4.1 As requested in Step 1, please ensure that the Palm Interface cable is securely connected to the Serial Port of your computer.

4.2 Please check that the HotSync Manager is running. You will find an icon in your Task Bar (close to your clock). If you cannot find this icon, please start the HotSync Manager from the Palm Desktop program group in your Start Button.



4.3 Press the HotSync button provided on the cradle on which your Palm Device is mounted. (Alternatively, start your Palm Device and choose the Systems Folder. Select HotSync from the Systems Folder.) Wait until the Synchronization process is completed.

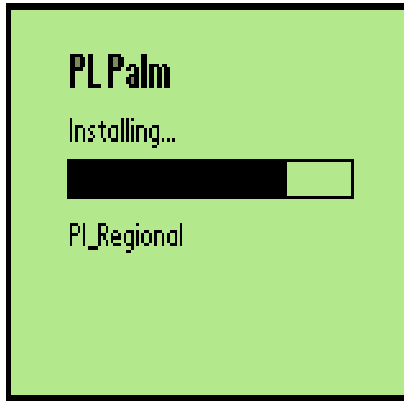
4.4 The installer for Parashara's Light - Palm Edition has been transferred from your desktop to your Palm Device, in the name of Install PL Palm.

STEP 5 : Installing Parashara's Light on your Palm

5.1 The installer for Parashara's Light - Palm Edition has been installed on your Palm Device. Tap the Install PL Palm icon to start the installer.



- 5.2 Upon successful completion of the process, Parashara's Light will be installed on your Palm Device and will be automatically launched. Parashara's Light is now ready to be used on your Palm Device.



Note : *Parashara's Light will run in the Demo mode, until you Register. Calculations will not be accurate in the Demo mode.*

STEP 6 : Registration

- 6.1 You will need to register in order to terminate the demo mode. To register, visit the following URL : <http://palm.parashara.com/buy.asp>.

Please fill in your personal details in the form presented on the web site. Please also provide the HotSync name for your Palm. Please ensure that the details you provide are correct. Submit the form when you are done.

- 6.2 Within approximately one business day after receipt of your registration, you will receive an email from **palm@parashara.com**. The email will have an attachment, called plpalm.pdb, and the instructions about how to upload it to your Palm device and register your unregistered copy. Save the attached file to your desktop, or any other convenient location on your harddrive. *Please keep a copy of this attached file in a place where you can find it back in the future, in case you ever need to reinstall the program.*

- 6.3.1 Start the Install Tool from the Palm Desktop program group. (Click on Start-> Programs-> Palm Desktop-> Install Tool).
- 6.3.2 Click on the 'Add' button. Choose PLPalm.pdb from the location where you saved it on your hard drive.
- 6.3.3 Click on 'Done' button' to finish your selection.
- 6.3.4 HotSync your PC by pressing the HotSync button on the Palm with Palm as described above.
- 6.4 Parashara's Light is now successfully installed on your Palm Device! Please read the online manual (select Start-> GeoVision-> Manuals), and feel free to explore all the features of the software.